

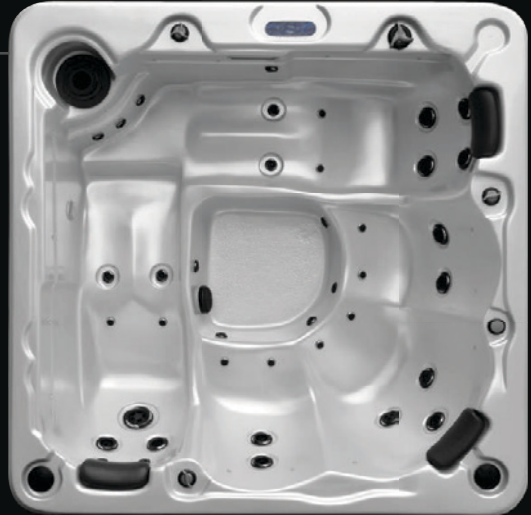
SPLP40

Spa Pools of Chepstow



2015 *Leisure Range*

The MIAMI-D PEARL



3 SEATS



2 LOUNGER



930 KG



28 JETS



199x199x78cm

EXTRA OPTIONS

- Air blower and jet system
- Aromatherapy
- O-zone mixing system
- Waterfall
- Balboa wifi bluetooth
- 16pcs mini-led
- Corner light
- iPod ready
- Full ABS base
- Subwoofer and surround system
- Suction release system

ACCESSORIES

- Spa safety handle
- Towel ring
- Movable table
- Coverlifter

| | |
|-----------------------------|--------------------------------------|
| <i>Jets stainless steel</i> | BDS - HRS |
| <i>O-zone system</i> | CD chip |
| <i>Acrylic shell</i> | Aristech (USA) |
| <i>Dry weight</i> | 280kg (approx) |
| <i>Filled weight</i> | 1210kg (approx) |
| <i>Total jets</i> | 28pcs |
| <i>Pillow</i> | 3pcs |
| <i>Power</i> | 220-240 V ,50Hz 16/32Amp |
| <i>Control system</i> | Balboa/SpaNet |
| <i>Heater</i> | 2KW |
| <i>Circulation pump</i> | yes |
| <i>Pump 1</i> | 2HP |
| <i>Pump 2</i> | NO |
| <i>Light</i> | 12V/12W |
| <i>Water divert</i> | 1pc |
| <i>Air regulator</i> | 2pcs |
| <i>Filtration system</i> | Top-mount skim filter |
| <i>Frame</i> | Pressured chemical-treated wood |
| <i>Synthetic Cabinet</i> | Gray/Red/Coffee/Cedar/Charcoal |
| <i>Isolation</i> | CFC -FREE foam |
| <i>Base</i> | ABS base |
| <i>Cover</i> | Maximum Energy Savings 5inch > 3inch |
| <i>Step</i> | Smart design extra strength |

UNIT 1 • GAERLLWYD BARN • EARLSWOOD • CHEPSTOW • MONMOUTHSHIRE • NP16 6AS

T: 01291 65 01 47

E: splash1@spapoolsofchepstow.co.uk • www.spapoolsofchepstow.co.uk

We reserve the right to improve our products without notice.